



# Connecting communities through our farms

Dayna Rowe - Bay Of Plenty Contract Milker

# ROWE FARMS



Family owned and operated

289 effective ha

950 Kiwi Cross Dairy Cows

Spring calving

70 effective ha support block

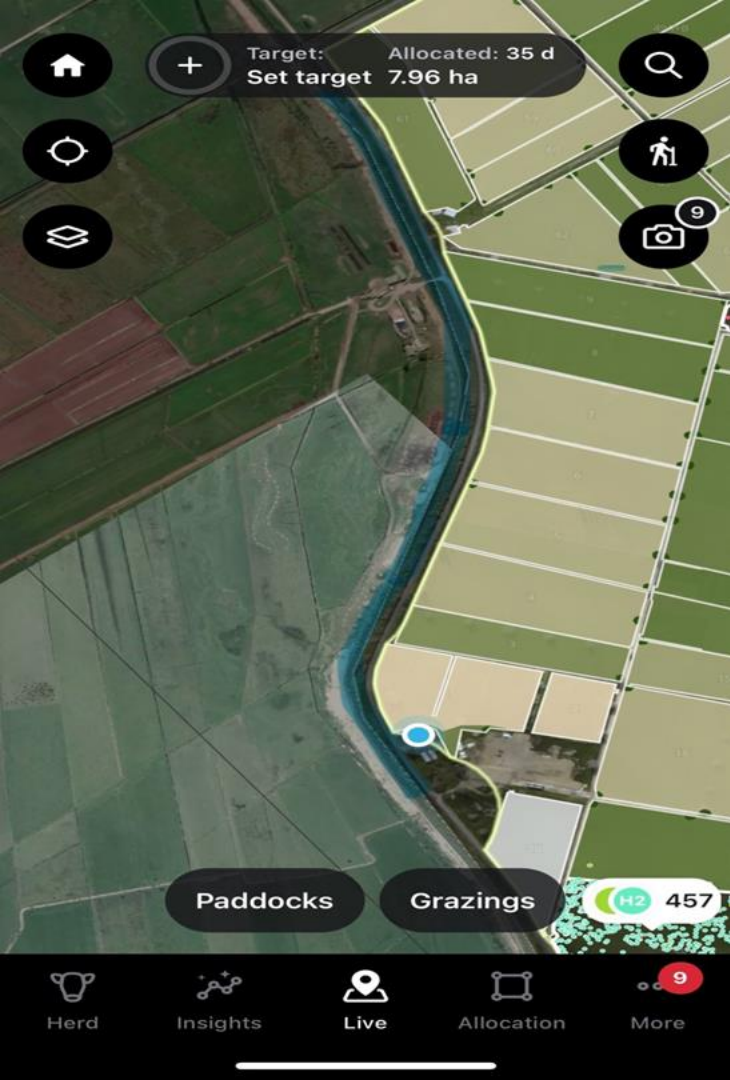
System 3-4 dependant on the weather conditions

70 effective ha support block

Grow 12 ha Maize silage on farm 4 ha on support block

Import Pke and DDG, Tapioca, Corn Gluten blend

1.5ha covered herd home with the ability to house and feed 1500 cows.



Highlighted in blue is the Kaikokopu Canal on the western edge of our farm.

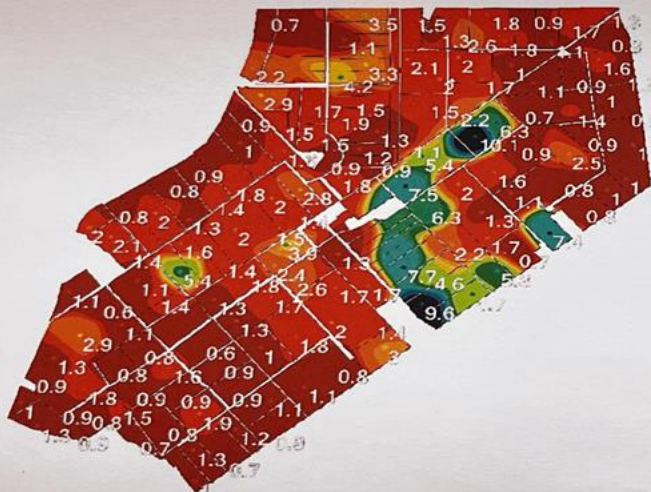
The Kaikokopu Canal is the water source for our cattle on farm and the extracted sand is the bedding for our Herd Home.

# Practical agronomic advice for the life of your soil

**Our mission is to improve nutrient efficiency and unlock your farm's agronomic potential while securing a sustainable environment for future generations**

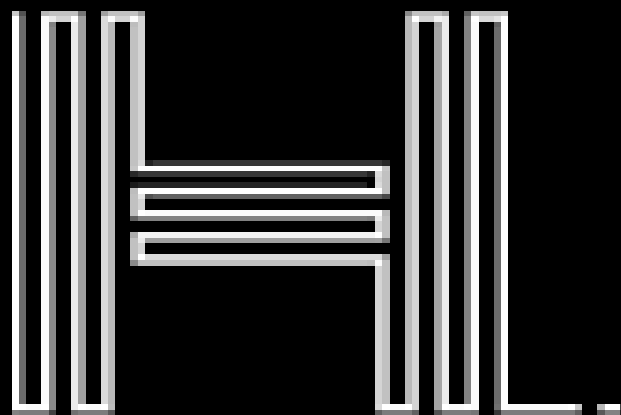
We specialise in creating variable rate applications (VRA) for the spreading of fertilizer, gypsum, lime, and compost, servicing dairy and horticulture farming operations in the Bay of Plenty and surrounding areas.

## Potassium Base Saturation (K %)

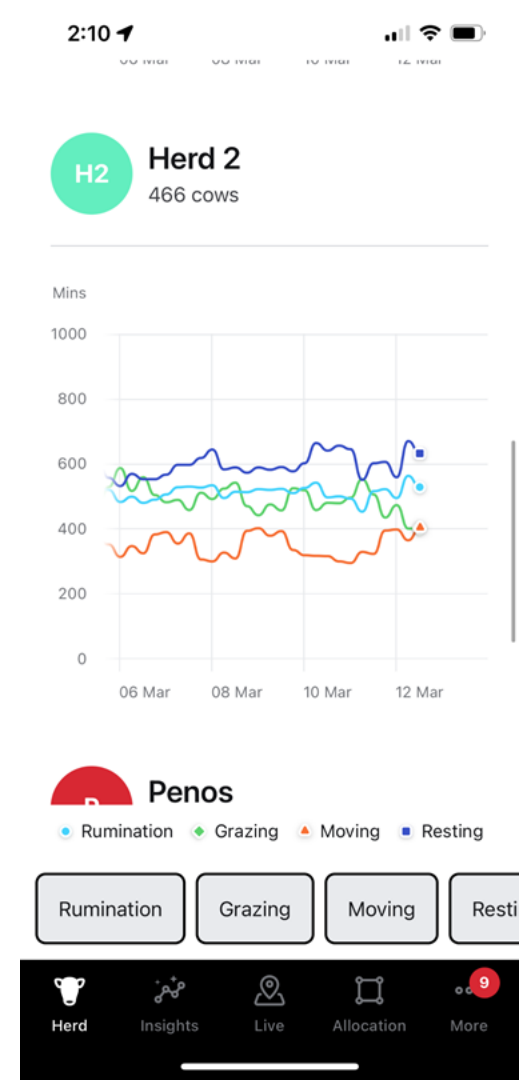
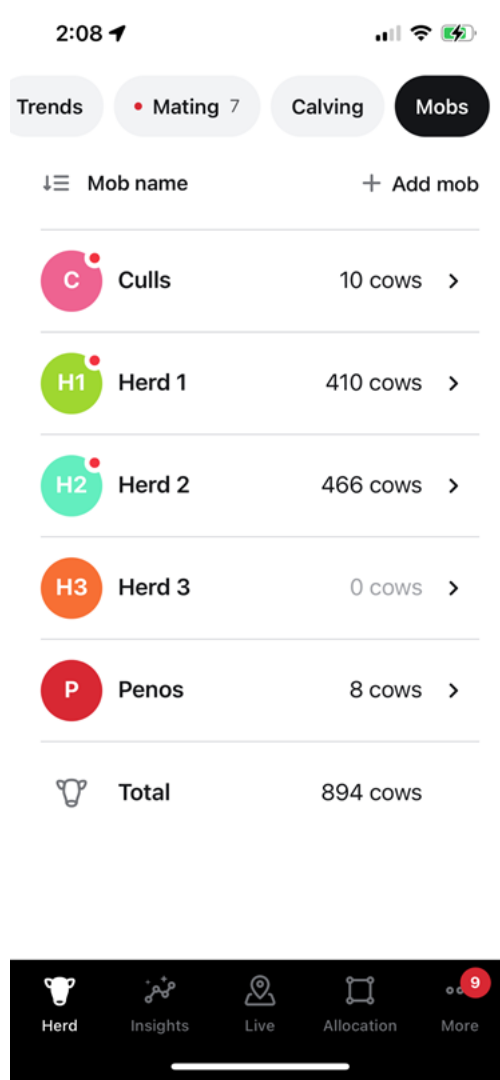
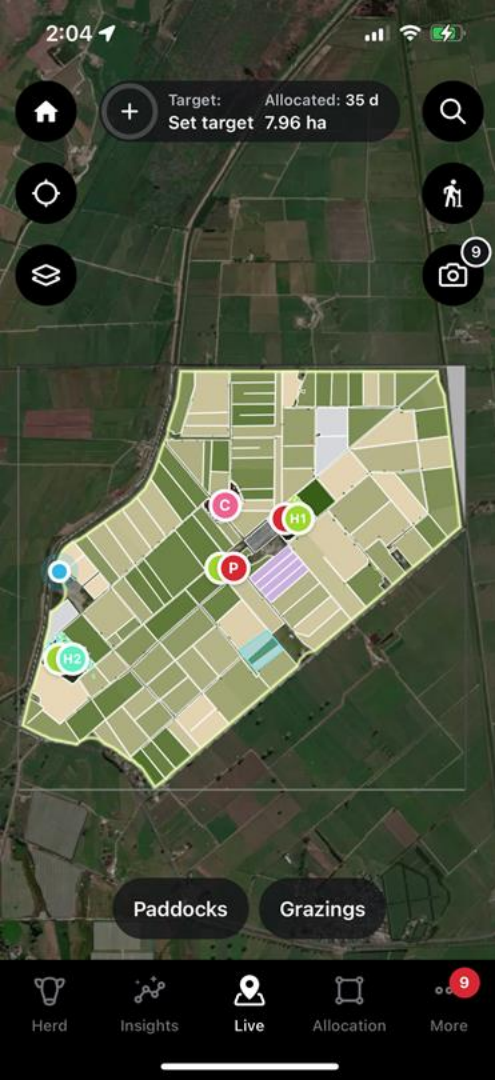


< 1.39 %	127.40 ha	44.16 %
1.39 - 2.18 %	96.48 ha	33.44 %
2.18 - 2.97 %	24.85 ha	8.61 %
2.97 - 3.76 %	8.97 ha	3.11 %
3.76 - 4.54 %	4.60 ha	1.59 %
4.54 - 5.33 %	7.13 ha	2.47 %
5.33 - 6.12 %	4.31 ha	1.49 %
6.12 - 6.91 %	4.96 ha	1.72 %
6.91 - 7.70 %	5.82 ha	2.02 %
7.70 - 8.49 %	0.61 ha	0.21 %
8.49 - 9.28 %	0.93 ha	0.32 %
> 9.28 %	2.46 ha	0.85 %

Activity Date:	4/4/2023
Min:	0.60 %
Max:	10.06 %
Mean:	2.01 %
Standard Deviation:	1.64 %
Mode:	0.70 %
Coefficient Of Variance:	81.28 %
Area:	288.78 ha
Total:	N/A



H A L T E E R



What are the barriers that are slowing down the pace of change?



- Attraction of the Dairy Industry to more diverse talents

- Attraction of the Dairy Industry to more diverse talents
- Time for our farm leaders to innovate and have bigger conversations with the community.

- Attraction of the Dairy Industry to more diverse talents
- Time for our farm leaders to innovate and have bigger conversations with the community.
- Regaining the soul of New Zealand farming communities - going back a bit to go forward



